



1 Palace Place, St James's Park  
London SW1E

GARTONJONES.COM



# 1 Palace Place, St James's Park London, SW1E

GARTON JONES.COM

49 Marsham Street Lettings:  
London SW1P 3DP +44 (0) 20 7340 0480  
westminster@gartonjones.com  
www.gartonjones.com

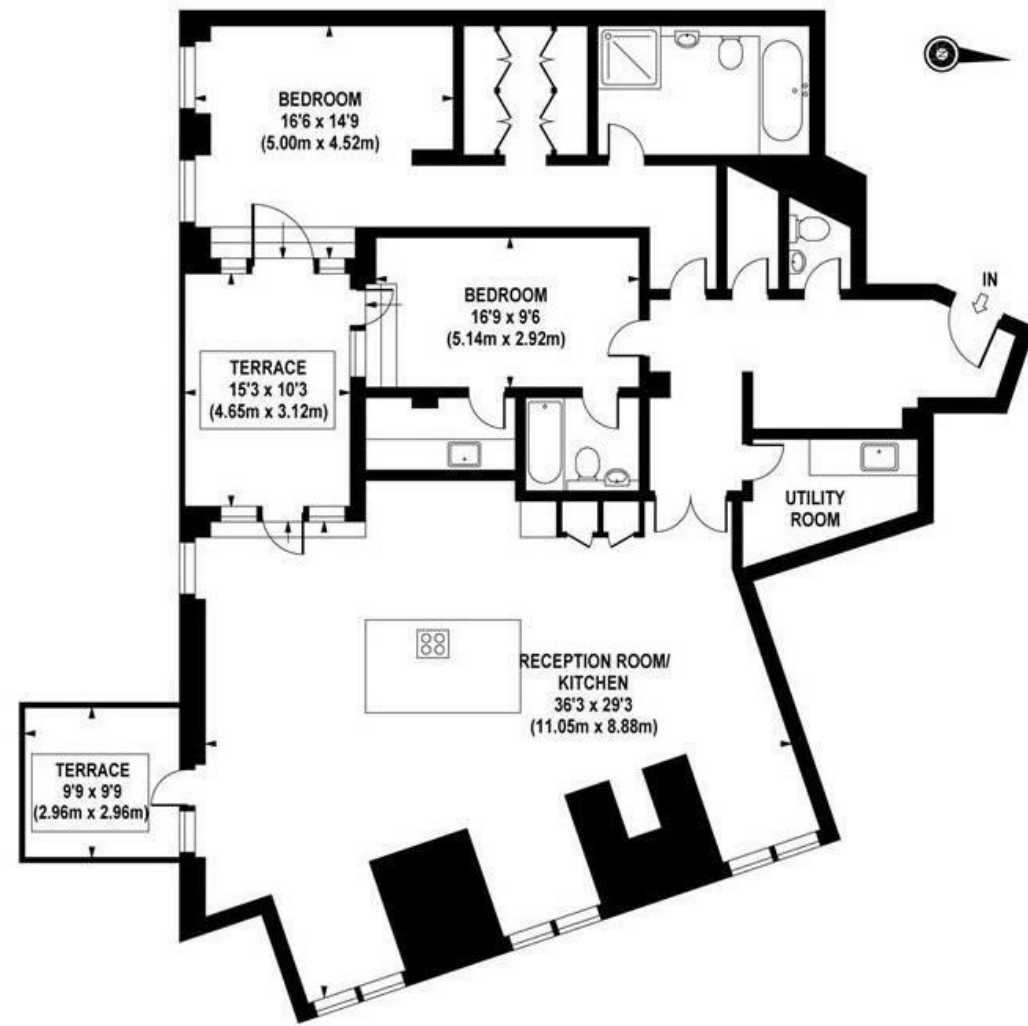
## £1,788 Per Week

A bright and extremely spacious 2 bedroom sub-penthouse apartment to rent of approx. 2120 square feet (196.95 Sq.M) located on the 7th floor (with lift) of this small luxury development neighbouring Buckingham Palace. The apartment is furnished to a high standard and further benefits from a dual aspect open plan reception room with access to 2 private terraces offering roof top views, there is a smart kitchen with integrated appliances, 2 en-suite bathrooms, a guest cloakroom and good storage including a utility cupboard and walk in wardrobes to both bedrooms. Palace Place is exceptionally well located and just a stone's throw from Victoria Station. You are surrounded by an array of iconic London attractions with 2 royal parks with Buckingham Palace at the end of the road. A plethora of hotels, eateries and retails shops which include The Goring, St Ermins', St James Conrad, The Ivy Victoria, Aster and Flight Club to name just a few. Garton Jones are pleased to confirm that they manage this property and are just a short walk from the development.

Council Tax Band G (London Borough of Westminster)  
Deposit: 6 Weeks  
Minimum Tenancy 12 Months  
EPC Rating: D (67)

- 2120 Square Feet (196 Sq.M)
- 7th Floor (Sub-Penthouse)
- 2 Double Bedroom Apartment
- Large Dual Aspect Open Plan Reception & Dining Room
- Kitchen with Kuppertsbusch Integrated Appliances
- 2 En-Suite Bathrooms & Guest Cloakroom
- 2 Spacious Terraces with Far Reaching Views
- 24 Hour Concierge & Secure Parking
- Close To Local Shops, Bars & Restaurants
- Moments From Victoria Transport Links





SEVENTH FLOOR

APPROX. GROSS INTERNAL AREA 2120 sq.ft / 196.95 sq.m



